

Monthly Weather Summary in Thailand August 2018

Thailand's weather in August 2018 was dominated by the southwest monsoon which prevailed over the Andaman Sea, Thailand and the Gulf of Thailand throughout the month and strengthened during mid-month. In addition, the monsoon trough which lay across the Myanmar, upper Laos and upper Vietnam towards the low pressure cell in the Gulf of Tonkin during early and late month moved southwards to lie over the northern and upper northeastern parts for few days. Besides, during mid-month, the tropical storm "BEBINCA" (1816) entered Thailand at Chiang Rai province in early morning of August 18 as the tropical depression after that it moved through Chiang Mai and downgraded into the low pressure cell covering Myanmar. These caused rainfall in Thailand with slightly to moderate rain, inducing below normal rainfall in most areas. Monthly rainfall was below normal in most parts of Thailand i.e. northern part 25.9 mm (12%), northeastern part 66.5 mm (11%), eastern part 45.9 mm (15%), southern part (eastern coast) 27.1 mm (22%) and southern part (west coast) 20.0 mm (5%) except for above normal in central part 32.0 mm (18%). The average total rainfall over Thailand in this month was 13 percent lower than normal. The accumulative rainfall in this year up to August was 12 percent higher than normal. Mean temperatures in upper Thailand was close to normal while slightly above normal in southern parts.

1 – 10 August: The southwest monsoon prevailed across the Andaman Sea, Thailand and the Gulf of Thailand throughout the period and strengthened during the second half of the period. In addition, the monsoon trough lay across the northern and upper northeastern parts toward the low pressure cell in the upper South China Sea during the second half of the period. It shifted northward to lie over Myanmar, upper Laos and Vietnam toward the active low pressure cell in the upper South China Sea which later intensified into the tropical depression in the afternoon of August 10. These caused scattered to fairly widespread rain in upper Thailand almost the whole period with heavy to very heavy rainfall in some areas. The highest daily rainfall was 217.0 mm at King Amphoe Khao Chamao in Rayong province on August 1 with flash flooding at Roi Et and Bung Kan provinces on August 1 and at Nong Khai province on August 2. In southern part, scattered to fairly widespread rain with heavy to very heavy rainfall in some areas was found along the east coast while western coast obtained fairly widespread rain with heavy to very heavy rainfall in some areas mainly during the middle and the end of the period. The maximum daily rainfall of 157.0 mm was measured at Pato in Chumphon province on August 10 and flash flooding was reported at Surat Thani province on August 8 with flooding at Phetchaburi province on August 9 and at Ranong province on August 10.

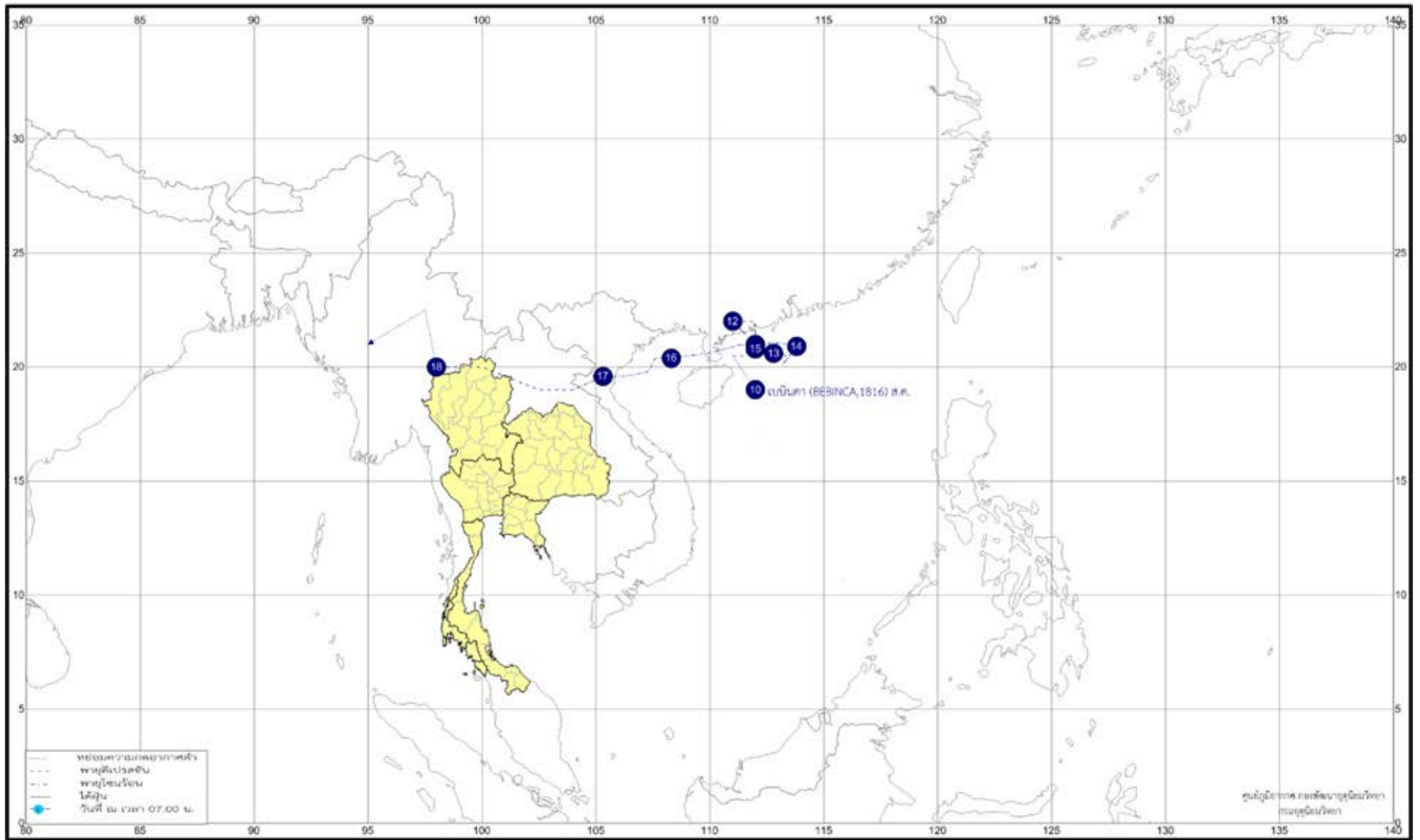
11 – 20 August: The tropical depression in the upper South China Sea intensified into a tropical storm "BEBINCA" in the morning of August 13. It moved westward slowly into the Gulf of Tonkin in the morning of August 16. It made landfall over upper Vietnam in the morning of August 17 passing Laos and weakened into a tropical depression in the afternoon of the same day before entering Thailand at Chiang Rai province in the early morning of August 18. After that, it moved through Chiang Mai province to Myanmar and later degenerated into an active low pressure cell covering Myanmar. In addition, the active southwest monsoon prevailed over the Andaman Sea, Thailand and the Gulf of Thailand throughout the period. These caused abundant rainfall in upper Thailand especially torrential

rain with heavy to very heavy rainfall was found in many areas at Chiang Rai, Chiang Mai, Phayao and Nan provinces on August 17. The heaviest daily rainfall in upper Thailand was 370.0 mm at Santi Suk in Nan province on August 16. Flash floods was reported at Trat province on August 14 and at Chiang Rai, Phayao and Nan provinces on August 17 and at Mae Hong Son, Chiang Mai and Lampang provinces on August 18 and at Lampang and Phayao provinces on August 18 and 19 and also at Phetchabun province on August 20. Gusty wind was reported at Samut Sakhon province on August 18. In southern part, isolated rain with heavy to very heavy rainfall in some areas was found during early and mid-period and increasing rainfall to fairly widespread rain with heavy to very heavy rainfall in some areas at the end of the period. The highest daily rainfall was 140.5 mm at Mueang in Ranong province on August 12. The floods have been reported at Phetchaburi and Surat Thani provinces and at Chumphon province on August 11 and at Ranong on August 12.

21 – 30 August: The monsoon trough lay across Myanmar, upper Laos and upper Vietnam toward the low pressure cell in the Gulf of Tonkin almost the whole period and shifted southwards to lie over Myanmar, northern and upper northeastern parts of Thailand for few days associated with the prevailing of the moderate to rather active southwest monsoon over the Andaman Sea, Thailand and the Gulf of Thailand resulted in abundant rainfall in Thailand throughout the period especially fairly widespread rain was reported in the northern, northeastern and central parts. The maximum daily rainfall in upper Thailand was 174.0 mm at King Amphoe Rattanawapi in Nong Khai province on August 25 with flash flood at Chiang Rai province on August 28, at Nakhon Nayok province on August 29 and at Phichit province on August 30 with overflowing bank at Lop Buri province on August 28. In southern part, plentiful of rain was observed along the west coast during early period with the highest daily rainfall of 158.3 mm at Mueang in Ranong province on August 23 while isolated to fairly widespread rain was found nearly the whole period along the east coast. Floods remained from the previous period at Phetchaburi province and also at Satun province on August 22 and 23.

-
- Note :**
- 1) Rainfall, temperatures and natural disasters in this report were updated up to September 6, 2018.
 - 2) “BEBINCA” mean Macanese Milk Pudding contributed by Macau, China.

Climatological Center
Meteorological Development Division
Meteorological Department



เส้นทางเดินพายุหมุนเขตร้อนที่เคลื่อนเข้าสู่ประเทศไทยเดือนสิงหาคม 2561

Monthly Current Report
Rainfall and Accumulative Rainfall
August 2018

Northern Thailand

Station	Temperature (°c)		Rainfall (mm)		Accumulative rainfall (mm) Since 1 January	
	Mean	Above or below normal	Actual	Above or below normal	Actual	Above or below normal
Chiang Rai	26.8	0.3	293.8	-64.6	1474.5	266.0
Mae Hong Son	26.7	-0.2	174.9	-64.4	859.1	-64.5
Phayao	27.1	0.4	165.2	-38.8	997.7	235.1
Chiang Mai	27.5	0.7	124.3	-92.6	672.3	-59.5
Tha Wang Pha	27.2	0.3	377.8	80.0	1543.5	468.9
Nan	27.5	0.2	241.9	-31.3	995.8	62.2
Lamphun	27.5	0.2	132.8	-39.9	784.3	150.3
Lampang	27.3	-0.1	125.0	-61.3	918.0	218.9
Mae Sariang	25.9	-0.3	185.1	-35.3	1115.2	301.4
Phrae	27.4	0.0	127.9	-77.6	913.3	112.4
Uttaradit	27.8	-0.2	308.4	45.0	1032.7	52.1
Bhumibol Dam	27.9	-0.2	16.7	-95.3	611.6	32.1
Tak	27.9	0.0	42.3	-73.5	604.5	17.8
Mae Sot	25.4	-0.2	465.1	143.4	1550.8	400.3
Umphang	24.4	0.1	197.8	-50.6	945.6	-82.0
Phitsanulok	27.6	-0.5	223.9	-23.7	887.8	24.4
Lom Sak	27.2	-0.1	128.2	-69.9	712.3	-30.3
Phetchabun	27.4	0.1	190.3	-8.7	859.3	41.4
Wichian Buri	28.0	-0.1	233.1	23.9	1068.0	249.7
Kamphaeng Phet	27.8	0.0	188.2	17.7	776.8	-18.6
Over the area	27.1	0.0	197.1	-25.9 -12%	966.2	118.8 14%

Northeastern Thailand

Station	Temperature (°c)		Rainfall (mm)		Accumulative rainfall (mm) Since 1 January	
	Mean	Above or below normal	Actual	Above or below normal	Actual	Above or below normal
Nong Khai	27.6	0.1	294.4	-28.8	1460.1	219.5
Loei	27.3	0.2	115.9	-69.0	919.4	65.5
Udon Thani	27.4	-0.4	316.0	30.9	1237.8	162.2
Nakhon Phanom	26.8	-0.2	471.5	-108.8	2497.0	551.9
Sakon Nakhon	27.2	-0.2	237.2	-120.7	1409.3	83.5
Mukdahan	27.4	0.1	289.7	-61.0	1657.3	505.5
Khon Kaen	27.5	-0.2	66.8	-149.6	900.5	23.4
Kosum Phisai	28.2	0.2	153.9	-78.0	1024.1	133.6
Roi Et	27.8	-0.1	199.8	-52.4	1037.8	40.2
Chaiyaphum	27.4	-0.2	120.4	-75.8	672.7	-74.4
Ubon Ratchathani	27.7	0.1	318.2	14.9	1328.1	186.9
Tha Tum	28.1	-0.1	127.7	-100.2	854.5	-122.1
Surin	27.7	0.1	193.3	-62.9	812.0	-206.0
Nakhon Ratchasima	28.5	0.4	86.9	-70.3	739.6	69.3
Chok Chai	28.1	0.2	110.1	-43.4	644.6	-21.7
Nang Rong	27.9	0.1	94.0	-87.7	535.6	-244.2
Over the area	27.7	0.0	199.7	-66.5 -25%	1108.2	85.8 8%

- NOTES :
- 1) Mean temperature is the average of daily dry-bulb temperature
 - 2) "T" is trace, rainfall amount less than 0.1 mm.
 - 3) "blank" is incomplete data.
 - 4) Temperature and rainfall are preliminary data.

Monthly Current Report
Rainfall and Accumulative Rainfall
August 2018

Central Thailand

Station	Temperature (°c)		Rainfall (mm)		Accumulative rainfall (mm) Since 1 January	
	Mean	Above or below normal	Actual	Above or below normal	Actual	Above or below normal
Nakhon Sawan	28.5	0.1	270.8	92.5	783.4	56.1
Bua Chum	27.9	-0.1	318.8	149.6	1317.0	635.3
Lop Buri	28.2	-0.1	211.1	60.2	869.8	201.5
Suphan Buri	28.5	0.0	82.8	-35.6	497.0	-7.5
Thong Pha Phum	25.9	-0.4	432.1	88.4	1583.7	241.0
Kanchanaburi	28.5	0.1	69.0	-29.3	452.9	-109.0
Bangkok Airport	28.7	-0.1	146.6	-24.3	1095.3	240.3
Bangkok Metropolis	28.6	-0.2	173.7	-45.6	1115.8	149.8
Over the area	28.1	-0.1	213.1	32.0 18%	964.4	176.0 22%

Eastern Thailand

Station	Temperature (°c)		Rainfall (mm)		Accumulative rainfall (mm) Since 1 January	
	Mean	Above or below normal	Actual	Above or below normal	Actual	Above or below normal
Prachin Buri	28.1	-0.2	398.8	40.3	1443.6	167.3
Kabin Buri	27.1	-0.6	376.4	86.0	1732.8	626.8
Aranyaprathet	28.0	0.2	124.4	-84.2	958.3	80.3
Chon Buri	29.1	0.1	97.4	-56.7	720.8	-42.7
Ko Sichang	28.8	0.1	51.6	-85.2	644.8	-28.7
Pattaya	28.1	-0.3	76.3	-21.3	574.8	-34.7
Sattahip	28.2	-0.6	67.5	-41.5	643.7	-57.5
Rayong	28.5	-0.3	107.5	-24.8	658.0	-218.9
Chanthaburi	27.7	0.2	426.0	-71.2	1744.8	-392.9
Khlong Yai	26.9	-0.1	840.4	-200.0	3712.1	19.6
Over the area	28.1	-0.1	256.6	-45.9 -15%	1283.4	11.8 1%

- NOTES :
- 1) Mean temperature is the average of daily dry-bulb temperature
 - 2) "T" is trace, rainfall amount less than 0.1 mm.
 - 3) "blank" is incomplete data.
 - 4) Temperature and rainfall are preliminary data.

Monthly Current Report
Rainfall and Accumulative Rainfall
August 2018

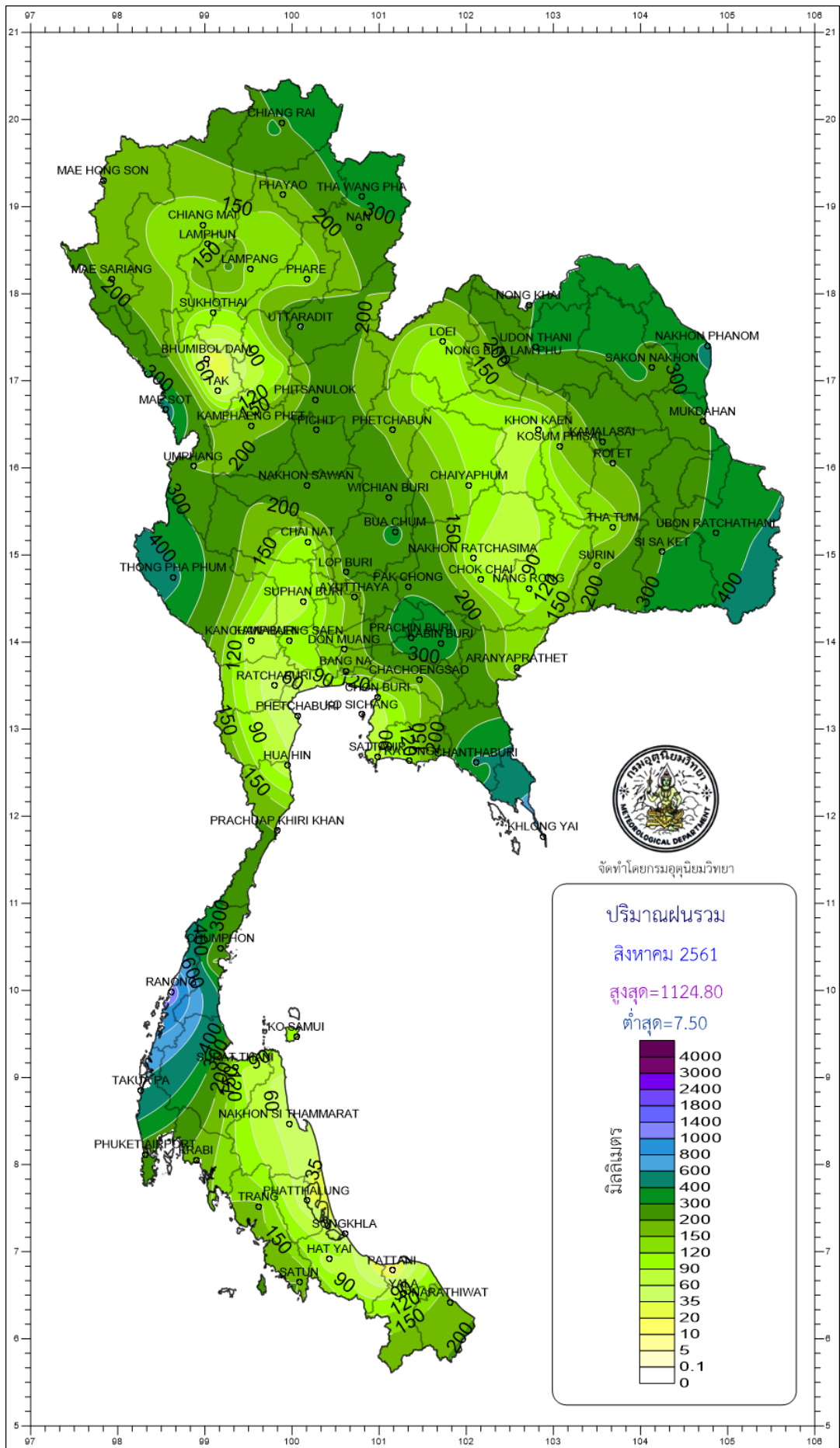
Southern Thailand, east coast

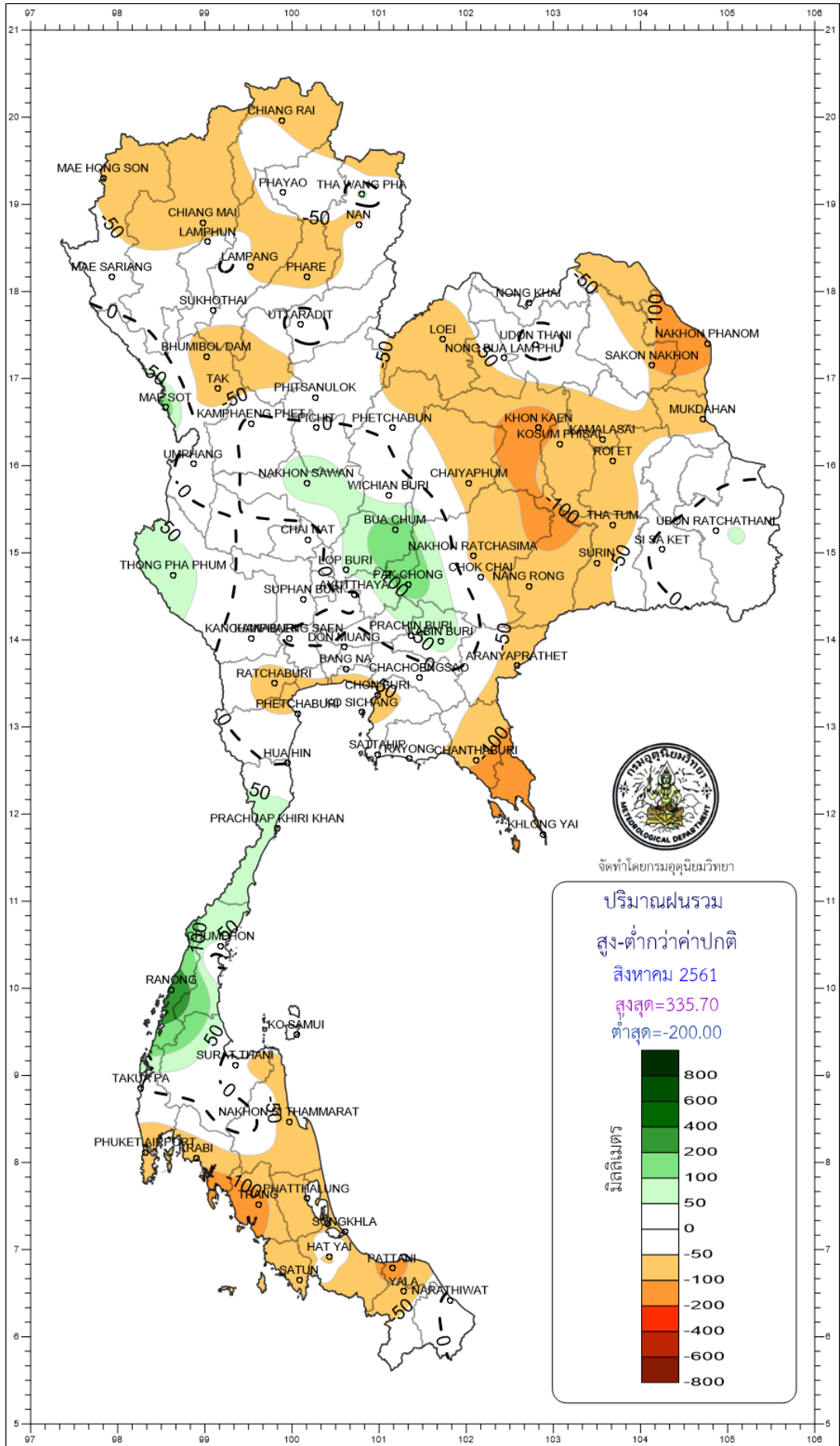
Station	Temperature (°c)		Rainfall (mm)		Accumulative rainfall (mm) Since 1 January	
	Mean	Above or below normal	Actual	Above or below normal	Actual	Above or below normal
Phetchaburi	28.5	-0.1	44.9	-47.4	497.7	47.8
Hua Hin	28.1	-0.4	70.7	-0.5	592.0	112.6
Prachuap Khiri Khan	26.8	-1.0	198.4	99.3	714.2	119.2
Chumphon	27.1	0.0	249.0	41.5	1251.2	219.6
Surat Thani	27.4	0.4	102.5	-37.1	1024.8	286.9
Ko Samui	28.6	0.4	91.7	-19.2	955.5	143.8
Nakhon Si Thammarat	28.3	0.5	49.8	-80.0	772.8	-176.2
Songkhla	29.2	1.0	21.7	-87.7	799.4	117.3
Hat Yai Airport	28.0	0.6	54.6	-58.4	676.0	-80.4
Pattani Airport	28.6	1.1	7.5	-126.5	845.1	128.2
Narathiwat	28.6	1.2	176.7	18.4	1237.3	334.2
Over the area	28.1	0.3	97.0	-27.1 -22%	851.5	113.8 15%

Southern Thailand, west coast

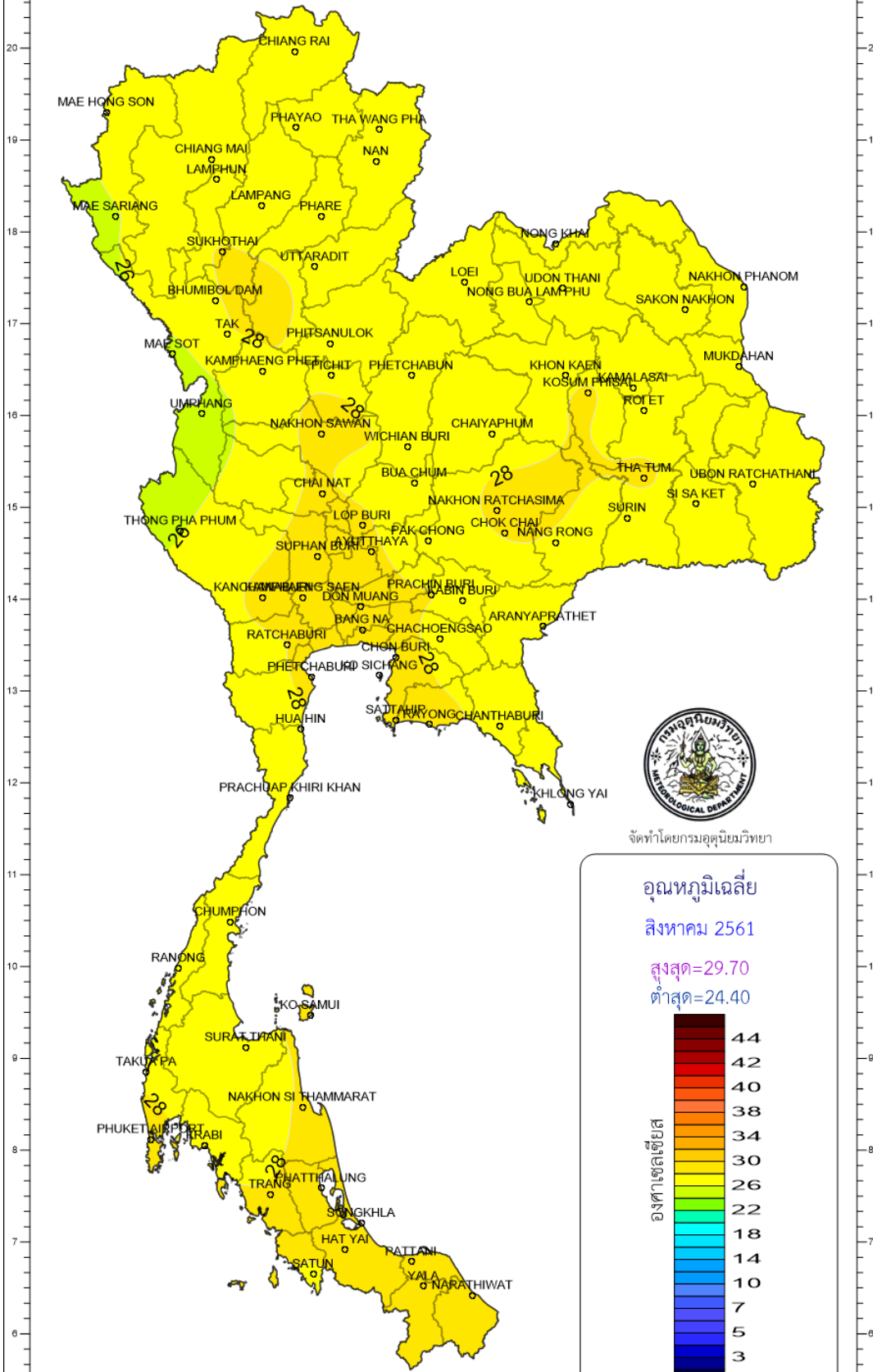
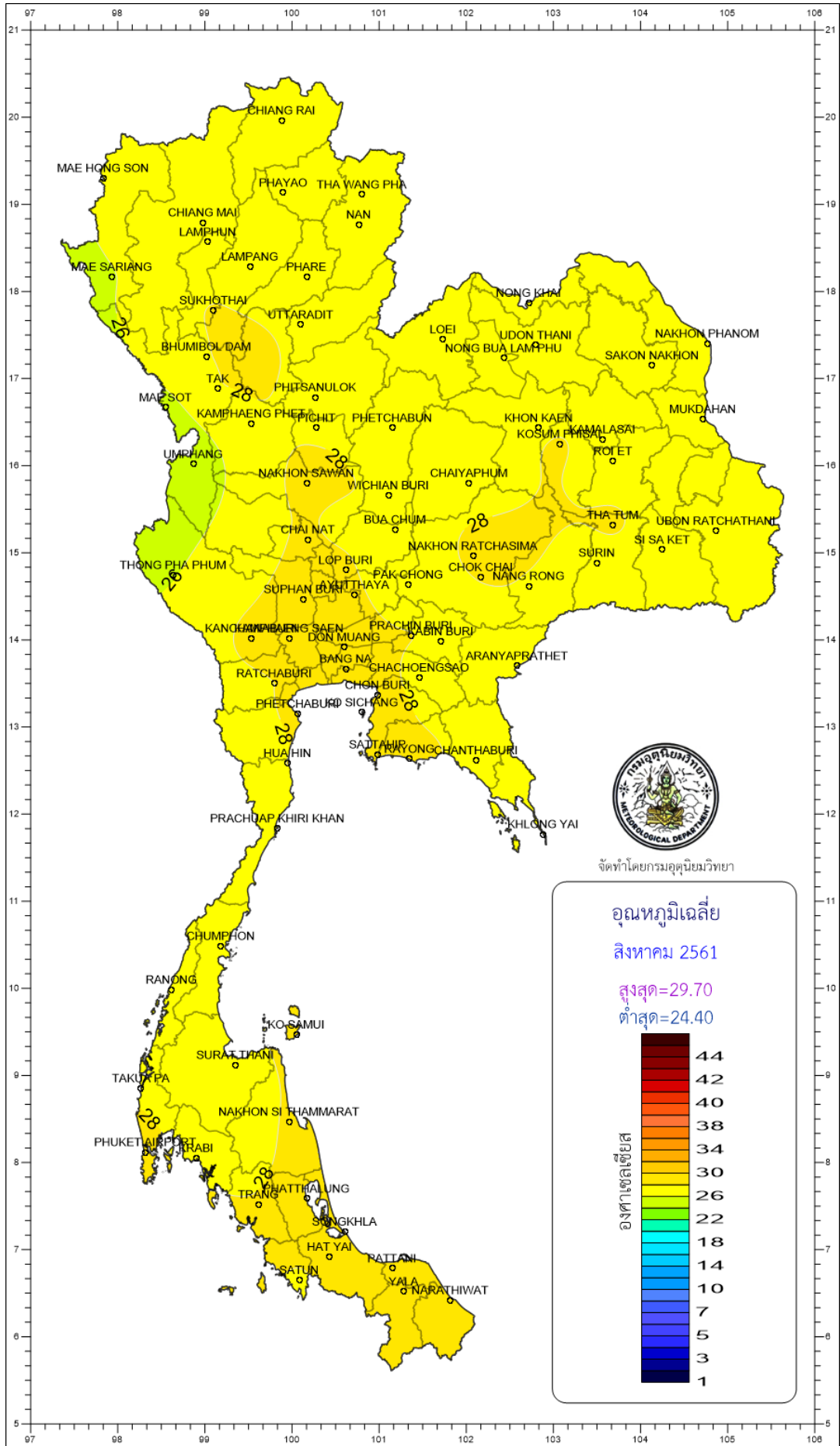
Station	Temperature (°c)		Rainfall (mm)		Accumulative rainfall (mm) Since 1 January	
	Mean	Above or below normal	Actual	Above or below normal	Actual	Above or below normal
Ranong	26.9	0.1	1124.8	335.7	3838.4	1038.8
Takua Pa	27.7	0.3	547.1	2.1	2710.7	469.0
Phuket	29.0	0.9	235.4	-51.4	1310.1	21.7
Phuket Airport	29.0	1.0	234.2	-95.6	1904.6	457.3
Ko Lanta	28.4	0.2	150.4	-153.8	1057.1	-261.1
Trang Airport	28.1	1.1	158.4	-116.7	1363.2	134.6
Satun	27.9	0.5	199.2	-60.1	1415.3	113.6
Over the area	28.1	0.5	378.5	-20.0 -5%	1942.8	282.0 17%

- NOTES :
- 1) Mean temperature is the average of daily dry-bulb temperature
 - 2) "T" is trace, rainfall amount less than 0.1 mm.
 - 3) "blank" is incomplete data.
 - 4) Temperature and rainfall are preliminary data.





จัดทำโดยกรมอุตุนิยมวิทยา

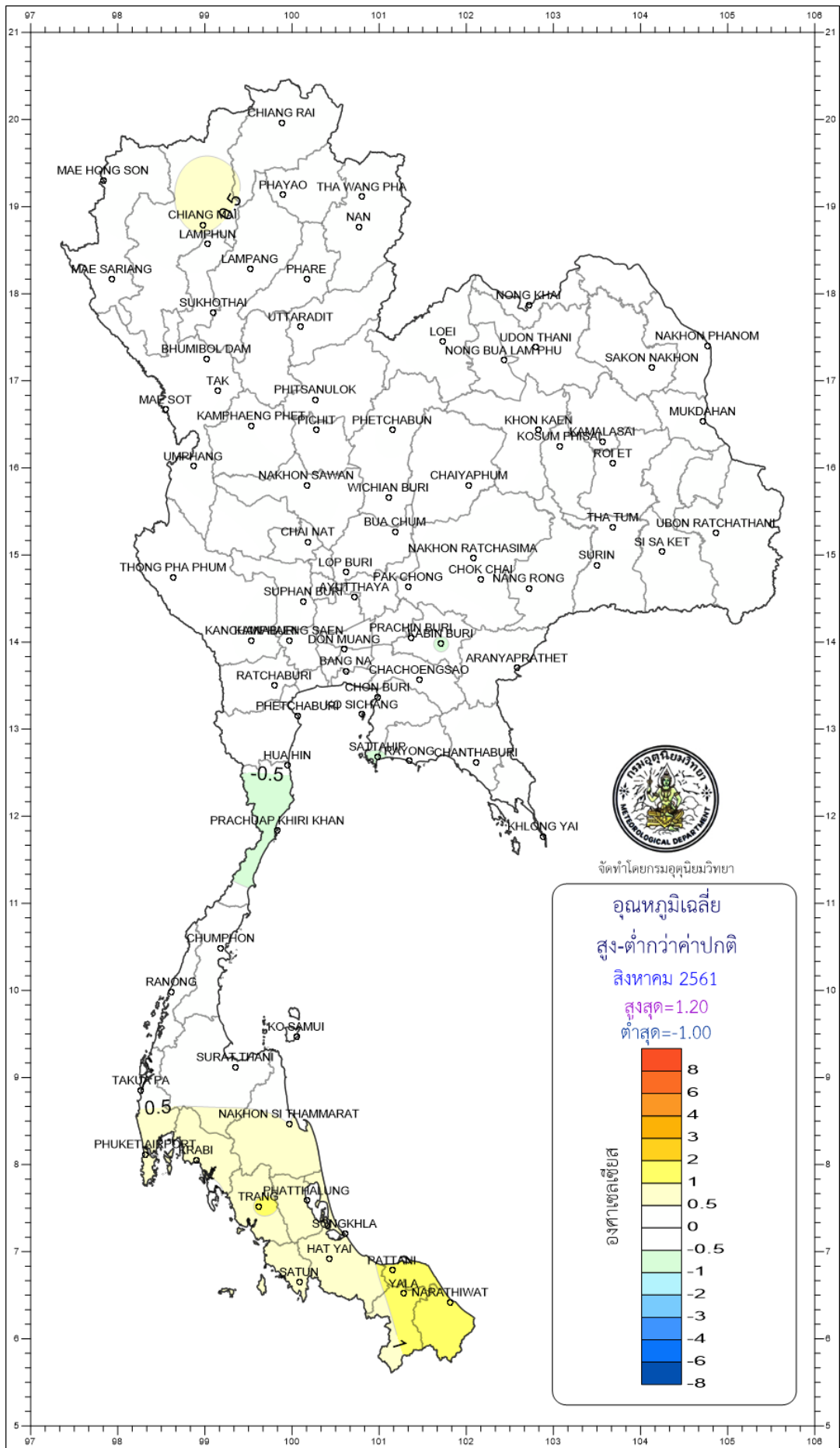


97 98 99 100 101 102 103 104 105 108

97 98 99 100 101 102 103 104 105 108

21
20
19
18
17
16
15
14
13
12
11
10
9
8
7
6
5

21
20
19
18
17
16
15
14
13
12
11
10
9
8
7
6
5



จัดทำโดยกรมอุตุนิยมวิทยา